



## Pedagogy

### DATE/TIME:

June 16-18, 2020  
8:30 a.m. - 3:30 p.m.

### LOCATION:

Tulare County  
Office of Education  
Makerspace Room  
7000 Doe Avenue  
Visalia, CA 93291

### COST:

\$475

### AUDIENCE:

Teachers, Coaches,  
and Administrators

### INCLUDES:

Materials, Lunch

### B.Y.O.D:

Bring Your Own Device  
(laptop or tablet)

# Tulare County Office of Education

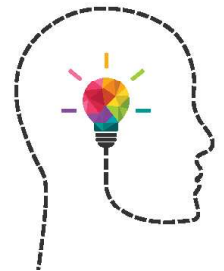
*Tim A. Hire, County Superintendent of Schools*

## Integrated Design

### Unit Creation for 21st Century Learning



Learn how to develop, assess and manage standards focused Project Based Learning in your California Standards Classroom using Tulare County Office of Education's 10 pblCORE characteristics. Participants have the opportunity to plan, design and receive peer feedback on an engaging unit using models and tools developed or adapted by Tulare County Office of Education. Participants will explore California Standards shifts to ensure rigor and relevance in each project. Universal Design for Learning (UDL) principles will be threaded throughout the trainings.



### Date and OMS Registration:

June 16-18, 2020

<http://tulare.k12oms.org/147-171914>

### pblCORE Characteristics

1. Real-World Connection
2. Content Knowledge
3. 21st Century Skills
4. Purposeful Assessment
5. Project Deliverable
6. Authentic Audience
7. Essential Question
8. Need to Know
9. Inquiry Process
10. Personalized Learning



*An Educational Resource Services  
Professional Development  
Opportunity*



### CONTENT CONTACT:

Katherine Goyette

(559) 651-3008 or [katherine.goyette@tcoe.org](mailto:katherine.goyette@tcoe.org)

### REGISTRATION CONTACT:

Irma Cerrillos

(559) 651-1193 or [irma.cerrillos@tcoe.org](mailto:irma.cerrillos@tcoe.org)



Find us on

CANCELLATIONS - Participants must cancel ten (10) working days prior to the event in writing via fax or email; those who do not will be billed for the registration fee. Workshops are subject to rescheduling or cancellation if a minimum of fifteen (15) participants have not registered ten (10) working days prior to the event.